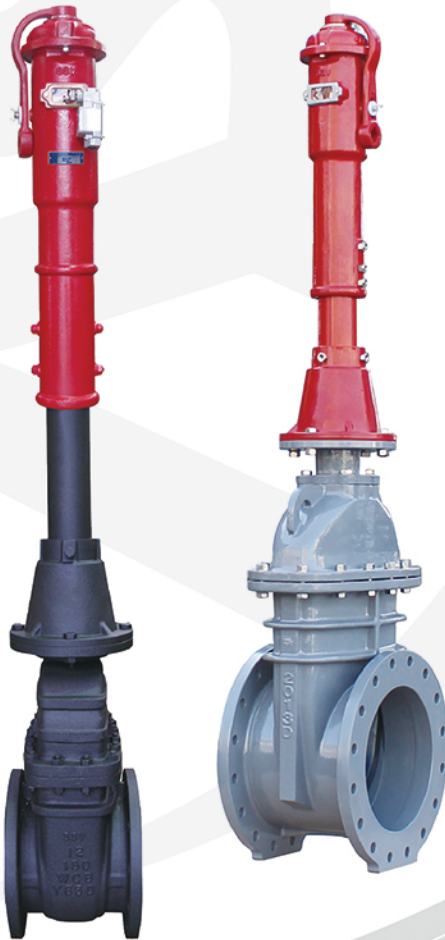


POST INDICATOR GATE VALVE

Working on the Basis of Quality and Trust

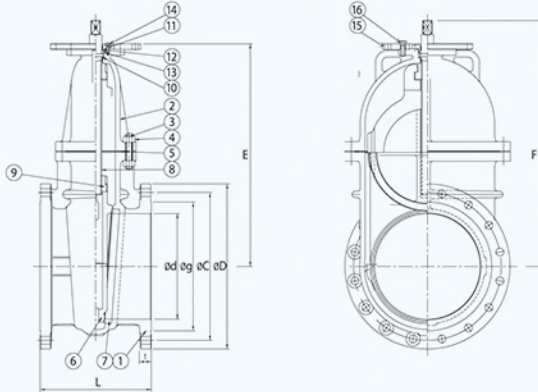


SOOSUNG Valve

FEATURE

It is a structure that the stem does not move up and down when opening and closing the disc.
It is installed on the pipe lines of the ground-hydrants and it can be opened and closed for hydrant maintenance.

DRAWING



MATERIAL

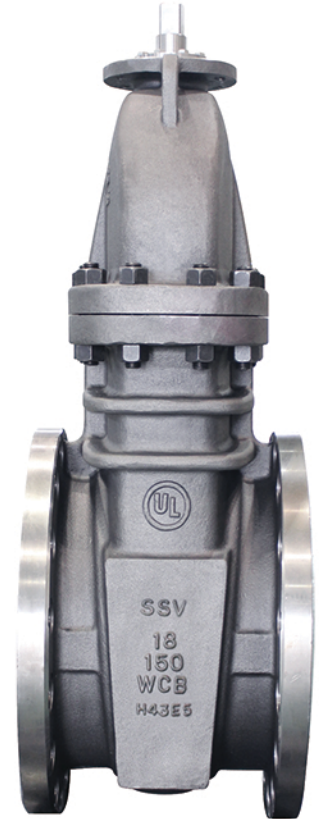
NO	DESCRIPTION	Q'ty	MATERIAL	NO	DESCRIPTION	Q'ty	MATERIAL
1	Body	1	A126 WCB/A395	9	SLEEVE	1	B62/B584 C83600
2	BONNET	1	A126 WCB/A395	10	BONNET BUSH	1	B62/B584 C83600
3	BONNET BOLT	1set	A193-B7	11	GRAND FLANGE	1	A216 WCB
4	BONNET NUT	1set	A194-2H	12	PACKING O-RING	2	NBR
5	GASKET	1	304SS/GRAPHITE	13	GRAND O-RING	2	NBR
6	DISC	1	A217-CA15	14	GRAND BOLT	1set	304SS
7	SEAT RING	1	A105+13CR FACE	15	MOUNTAIN FLANGE	1	A283 C
8	STEM	1	A276-304	16	MOUNTAIN BOLT	1set	304SS

• The materials above are subject to change upon customer's request.

DIMENSION

SIZE	L	FLANGED END DIMENSION								Weight (kg)
		d	g	C	D	t	n-Øh	E	F	
4"	229	100	157.2	190.5	230	24.3	8-19	308	354	44
6"	267	150	215.9	241.3	280	25.9	8-22.3	398.5	448	70
8"	292	201	269.9	298.5	345	29	8-22.3	477.5	527	106
10"	330	252	323.8	362	405	30.6	12-25.4	585	650	167
12"	356	303	381	431.8	485	32.2	12-25.4	670	740	239
14"	381	334	412.8	476.3	535	35.4	12-28.6	737	802	345
16"	406	385	469.9	539.8	595	37	16-28.6	813	898	490
18"	432	436	533.4	577.9	635	40.1	16-32	921.5	1005	578
20"	457	487	584.2	635	700	43.3	20-32	1026.5	1110	731
24"	508	589	692.2	749.3	815	48.1	20-35	1194.5	1286	1043

• Face to Face Dimension ASME B 16.10, Flange Dimension ASME B 16.5



SPECIFICATION

	ASME B16.34	UL Listed
SIZE	4"~24"	4"~24"
WATER WORKING PRESSURE	CLASS 150	MAX 250PSI (Fire Protection)
END CONNECTION	FLANGED	FLANGED
BODY MATERIAL	CAST STEEL DUCTILE IRON	CAST STEEL DUCTILE IRON

Non Rising Stem Gate Valve (NRS GATE VALVE)

Indicator Post (ADJUSTABLE TYPE)



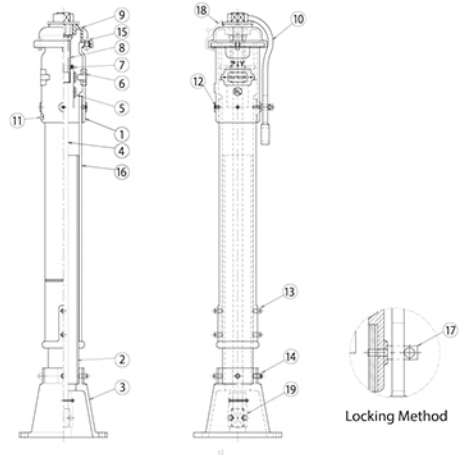
SPECIFICATION

SIZE	4"~24" (UL Listed)
OPERATION TYPE	LEVER
ABOVE GROUND	1000m
ADJUSTABLE RANGE	MAX. 500mm
BARREL MATERIAL	CAST IRON&STEEL PIPE

FEATURE

- Attached to NRS GATE VALVE on the fire fighting water pipe and it can control VALVE-OPENING and CLOSING from the ground via LEVER or GEAR TYPE.
- The status of valve opening and closing is checkable via transparent box on the indicator post. As a result, maintenance is much easier.
- ADJUSTABLE TYPE is a structure that workers can adjust length of the indicator post according to depth of the piping on the spot of burying valve.

DRAWING



MATERIAL

PART NO.	PART NAME	Q'ty	MATERIALS (ASTM SPECIFICATION)
1	TOP SECTION	1	A126 CLASS B
2	LOWER BARREL	1	A53 GR A(4"-40SCH)
3	BOTTOM SECTION	1	A126 CLASS B
4	OPERATING STEM	1	SQUARE BAR(A36)
5	OPEN/SHUT TARGET	2	ALUMINIUM
6	INDICATOR FLANGE	2	A351 CF8
7	TARGET CARRIER NUT	1	B62 or B584 C83600
8	OPERATION STEM NUT	-	A351 GR CF8
9	COVER	1	A126 CLASS B
10	LEVER	4	A126 CLASS B
11	NAME PLATE	1	A240 304
12	TOP SECTION BOLT	3	AISI 304
13	UPPER BARREL BOLT&NUT	4	AISI 304
14	BOTTOM SECTION BOLT&NUT	4	AISI 304
15	COVER BOLT&NUT	2	AISI 304
16	UPPER BARREL	1	A126 CLASS B
17	LOCKING BOLT	1	A36
18	SEALING MRTHOD	1	STAINLESS STEEL WIRE
19	COUPLING	1	A216 WCB

POST INDICATOR GATE VALVE



API 6D-0718



ISO 9001



LISTED

UL



MODEL NO **PIV-1**



MODEL NO **PIV-2**
(RUBBER LINING TYPE)



PIV-1GT
GEAR TYPE
(LIMIT SWITCH)



PIV-1LT
LEVER TYPE
(TAMPER SWITCH)

FEATURES

- Post indicator Gate Valves is installed on the pipe lines of the ground-hydrants and it can be opened and closed for fire-hydrants maintenance.
- NRS Gate valve is a structure that stem does not move up and down when opening and closing the disc.
- Post indicator attached to NRS Gate valve on the fire fighting water pipe and it can control VALVE-OPENING and CLOSING from the ground via LEVER or GEAR TYPE.
- The status of valve opening and closing is checkable via transparent box on the indicator post. As a result, maintenance is much easier. ADJUSTABLE TYPE is a structure that workers can adjust length of the indicator post according to depth of the piping on the spot of burying valve.
- Tamper switch can be attached.



SOOSUNG Valve

14, Majung 5-ro, Seo-gu, Incheon, Korea

Tel +82-32-569-4230 Fax +82-32-569-4234

Email soosung@duocheck.co.kr

Website www.duocheck.co.kr

